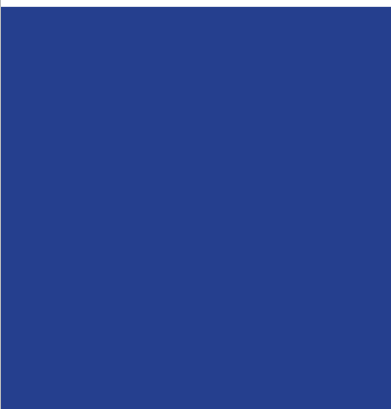


# ENERGY GUARD<sup>®</sup> Retrofit Kit

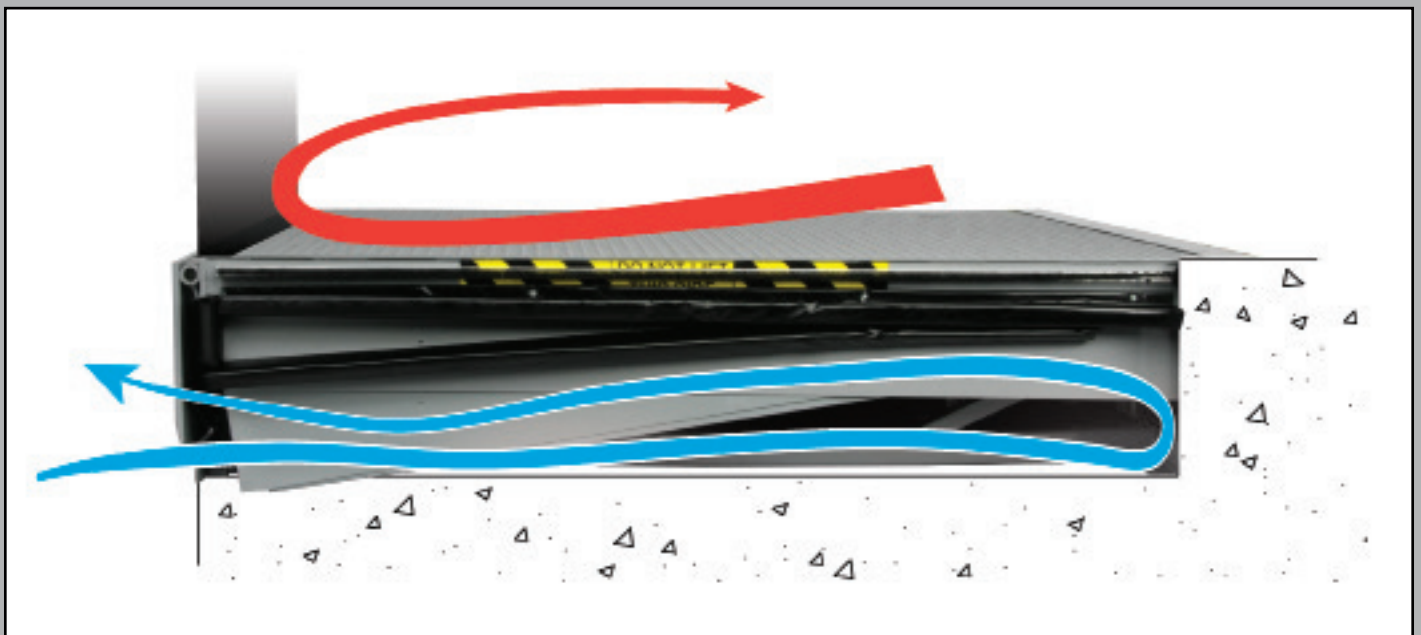


**APS Resource<sup>®</sup>**

*Your Aftermarket Solution*

# ENERGY GUARD®

ENERGY GUARD provides a superior perimeter seal along the sides and rear of your dock leveler and prevents energy loss. The innovative design closes off the gaps between the dock leveler and concrete pit walls - typically missed by traditional weather seal or under-leveler seals attached to the front of the dock leveler. ENERGY GUARD prevents the mass flow of air, minimizing the transfer of heat and energy into and out of the facility.



## Features:

- Fits common dock leveler widths - 6', 6.5' and 7' and common dock leveler lengths - 6', 8' and 10'
- Patent pending design avoids risk of fabric being cut, torn or damaged by trailers or debris, resulting in expensive replacement
- Helps prevent mass flow of air, minimizing transfer of energy into and out of the facility
- Available for most Kelley, Serco and some competitive dock levelers
- Life cycles 50,000+

## Benefits:

- Rear hinge seal constructed of durable 2-ply material, die cut to fit around the rear hinges of the dock leveler; seals off gaps around sides and rear of dock leveler
- Triangular shaped seal assemblies are open cells foam encapsulated with reinforced vinyl
- Effective perimeter seal (sides & back) up to 9" above deck
- Unrestricted access to pit for cleaning and dock leveler inspection; no curtains or fabric blocking access to the dock leveler and pit

# Retrofit Kit



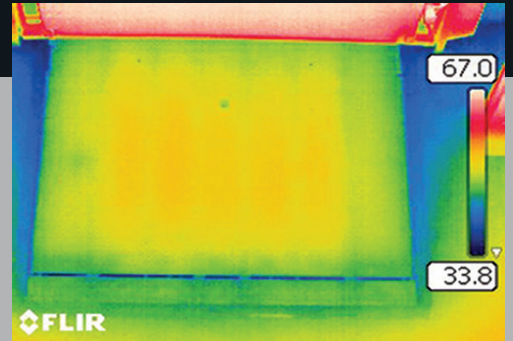
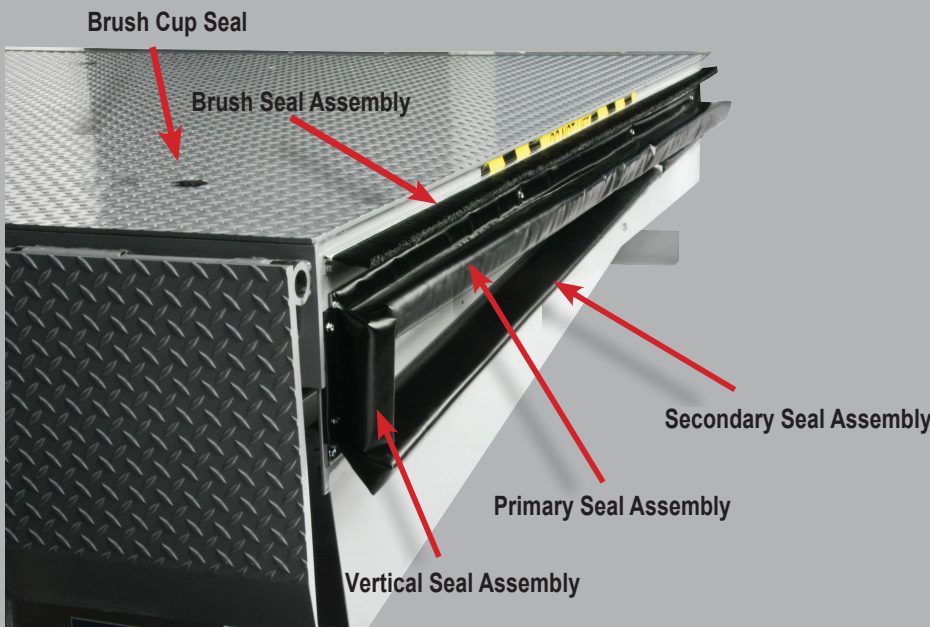
Brush Cup Seal



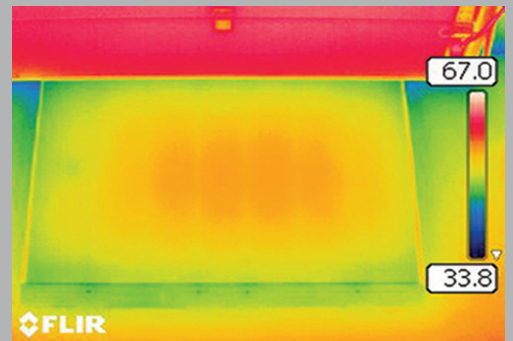
Rear Brush Seal



ENERGY GUARD components seal all leveler openings



**BEFORE:** Hot or cold air can easily transfer through perimeter gaps.



**AFTER:** ENERGY GUARD effectively seals off the perimeter gaps.

**Call APS Resource for an energy calculation and Thermo Analysis!**

**Location**  
 State  City

**Facility Information**  
 Inside Temperature  °F  
 Operating Hours/day  hrs  
 Work days per week  days  
 Fuel Cost: Natural Gas  Fuel  Propane  Electric  \$0.09 \$ per Therm (Default is National Value)  
 Number of Docks:

**Dock Information**  
 Leveler Type: Pit  Vertical  EOD   
 Leveler Size: Width  ft Length  ft  
 Pit Size: Width  in Length  in Depth  in  
 Energy Guard Seal: Yes  No  Brush Seal: Yes  No

**Location Averages:**  
 Winter Temp 59.64 °F Summer Temp 94.02 °F  
 Wind Speed 9.3 mph  
 Heating Degree Days 0 Cooling Degree Days 195  
 Peak Temperature: Coldest 35 °F Hottest 91 °F  
 Work days per year 260 Days

**CALCULATE ANNUAL ENERGY LOSS PER DOCK**  
 192,553,843.42 (BTU/YR)  
 \$ 5,079.09 /YR

**CALCULATE ANNUAL ENERGY LOSS TOTAL BUILDING**  
 3,851,076,868.31 (BTU/YR)  
 \$ 101,581.75 /YR

**Location**  
 State  City

**Facility Information**  
 Inside Temperature  °F  
 Operating Hours/day  hrs  
 Work days per week  days  
 Fuel Cost: Natural Gas  Fuel  Propane  Electric  \$0.09 \$ per Therm (Default is National Value)  
 Number of Docks:

**Dock Information**  
 Leveler Type: Pit  Vertical  EOD   
 Leveler Size: Width  ft Length  ft  
 Pit Size: Width  in Length  in Depth  in  
 Energy Guard Seal: Yes  No  Brush Seal: Yes  No

**Location Averages:**  
 Winter Temp 59.64 °F Summer Temp 94.02 °F  
 Wind Speed 9.3 mph  
 Heating Degree Days 0 Cooling Degree Days 195  
 Peak Temperature: Coldest 35 °F Hottest 91 °F  
 Work days per year 260 Days

**CALCULATE ANNUAL ENERGY LOSS PER DOCK**  
 64,142,141.80 (BTU/YR)  
 \$ 1,691.91 /YR

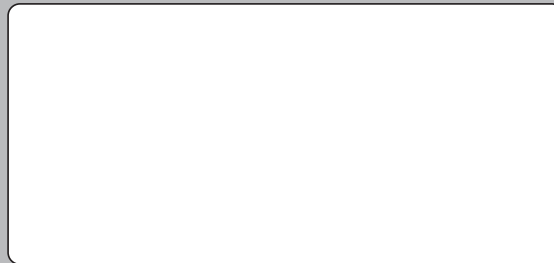
**CALCULATE ANNUAL ENERGY LOSS TOTAL BUILDING**  
 1,282,842,836.06 (BTU/YR)  
 \$ 33,838.18 /YR

Energy calculation done for a warehouse in Miami, Florida with 20 docks- total savings for the year are: **\$67,743.57**

## **APS RESOURCE'S COMPREHENSIVE LINEUP INCLUDES:**

airDefense® Retro Fit Kits  
APS&GO-LED™ Safety Light Systems  
APS 2000® Rotating Hook Vehicle Restraint  
ATC - Air Conversion Kit™  
Bollard Covers  
Bumper Brackets & Buildouts  
Column Protectors  
Curb Angle Sets  
Dock Bumpers  
Dock Defender™ Bumper  
Dock Guide Lights  
Dock Impact Barrier™  
Dock Impact Barrier-LC™  
Dock Light / Fan Combinations  
Dock Seal Re-covers  
Dock Seal Wear Pleats  
Dock Strobe™  
Dock Stuff®  
Dock Visual Barrier  
DOK-LOK® Replacement Parts  
Door Edge Sealr™  
Door Section Saver  
Door Sprag™ Seals  
Drain Pipe Protectors  
DUAL CHAIN™  
ENERGY GUARD® Retrofit Kits  
E-Saver 30™ LED Lamp  
E-Saver 38™ LED Lamp  
Extra Length Dock Bumpers  
FLEX-BACK™ Door Panel  
Fork Sentry  
G-Flex Dock Light™  
G-Flex LED Dock Light™  
Heavy-Duty Adjustable Fan/Light  
High Impact LED™ Dock Light  
Hold-Safe™ Trailer Stabilizer  
HTC - Hydraulic Conversion Kit™  
Impact-A-Track Reflect  
Impact-A-Track LED  
Kelley Atlantic Brand Service Parts  
Kelley® Brand Service Parts  
L.D.T. Slider Block  
Laminated Dock Bumpers  
LED Guide Lights  
LED Upgrade Kits  
Metal Head Dock Lights  
Molded Dock Bumpers  
Pipe Bollards  
Pit Kits  
Polycarbonate Head Dock Lights  
Rack Post Protectors  
Rear Spiral Seal  
Reflect & Guide Stripes  
Rite-Hite® Brand Service Parts  
Security Dock Gates  
Sentry-Rail™ Guard Railing  
Sentry-Rail - LT™ Guard Railing  
Serco® Brand Service Parts  
Spring Head Dock Lights  
Stand-off Kits for Restraints  
Steel Faced Dock Bumpers  
Steel Pit Kits  
S.W.A.T. (Secondary Warning Alert Technology)  
Tactical LED Dock Light  
Trak-Sentry™ Door Track Protectors  
Truck Alert Light Communication Systems  
Turbo-ES™ Fan  
Visual Barriers  
Weatherseal Kits for Dock Levelers & Doors  
WeatherWall  
Wheel Chocks & Chains  
Work Safe Gate™  
Z-Guard Door Track Protectors

Your APS Resource Local Distributor Is:



APS Resource reserves the right to change specifications and designs without notice and without incurring obligations. APS products may be the subject of one or more U.S. and/or foreign, issued and/or pending, design and/or utility patents. APS Resource as word and logo are registered trademarks belonging to Entrematic Group AB or other companies controlled by the same organization. All rights reserved.



**APS Resource®**  
*Your Aftermarket Solution*

**6219 W. Eastwood Ct.  
Mequon, WI 53092 USA  
(262)-518-1000**