

# Sentry Rail™



Figure 1: System of Sentry Rail installed to protect assembly process area.

The addition of Sentry Rail to a facility creates a safer environment by providing premium protection for equipment and personnel. Its steel construction and simple installation make adding Sentry Rail an easy decision.



Figure 2: Double post, double rail installation

## Design Highlights

- Powder-coated safety yellow for high visibility and lasting durability
- Posts are 4" square high strength steel with 5/8" thick baseplate
- Post caps and hole plugs included for aesthetics
- Optional swing gate, lift-out rail and offset posts available
- Installation instructions provided, use instruction AP7284
- These products carry a (1) year limited warranty with APS Resource

## Technical Specifications

Available Sizes	Single-rail: 18" high
	Double-rail: 42" high
Industry Standards	Withstands a 10,000 lb load at 4 mph* (lift-out reduces to 5,000 lbs)
	Note: loads are based on unit installed into 5" concrete flooring
Construction Material	Heavy-duty welded steel
	Rails are 11 gauge steel

### Project Information

Job Name \_\_\_\_\_  
 Address \_\_\_\_\_  
 General Contractor \_\_\_\_\_  
 Distributor \_\_\_\_\_  
 Model \_\_\_\_\_  
 Quantity \_\_\_\_\_

### Certified for Construction

By \_\_\_\_\_  
 Company \_\_\_\_\_  
 Address \_\_\_\_\_  
 Date \_\_\_\_\_



# Sentry Rail™

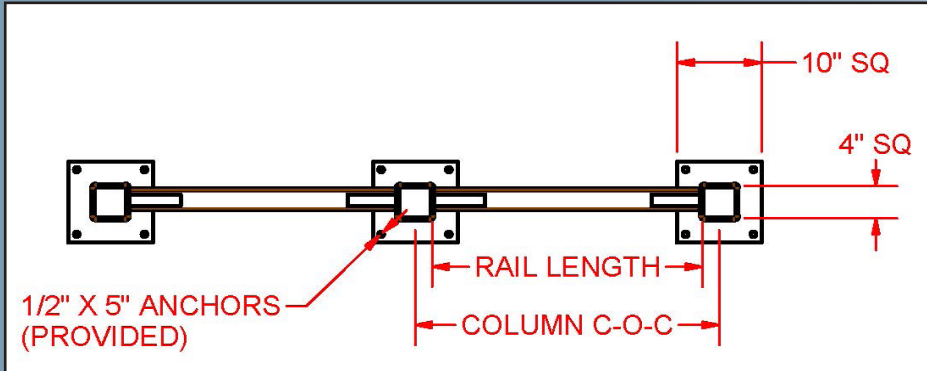


Figure 3: Rail length and column distance

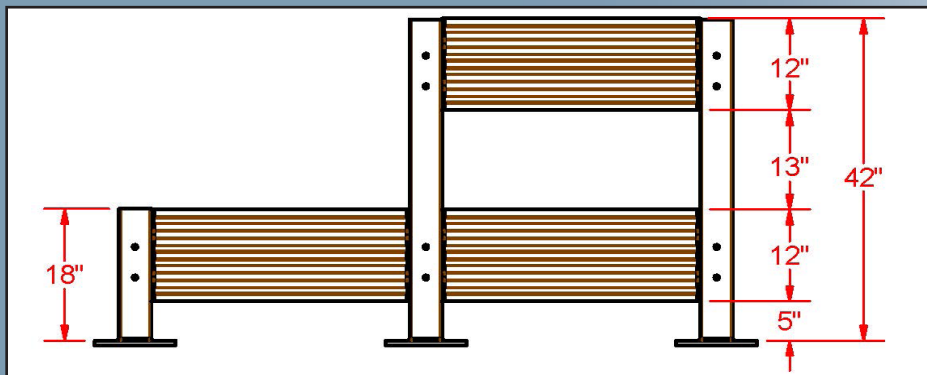


Figure 5: Heights and spacing for single rail and double rail

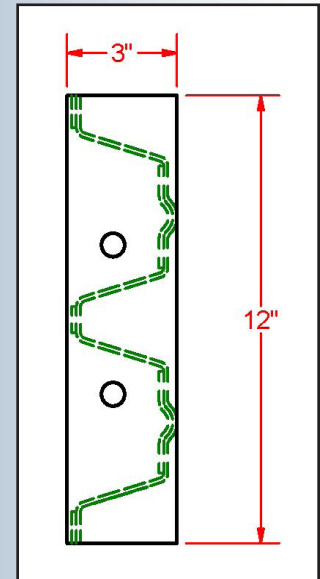


Figure 4: Rail height

P/N	Description
SC1	POST, 18" Single-Rail
SC2	POST, 42" Double-Rail

P/N	Actual Rail Length	Column C-O-C	Description
SR3	2'8"	3'	RAIL, 3 ft. Section
SR4	3'8"	4'	RAIL, 4 ft. Section
SR5	4'8"	5'	RAIL, 5 ft. Section
SR6	5'8"	6'	RAIL, 6 ft. Section
SR7	6'8"	7'	RAIL, 7 ft. Section
SR8	7'8"	8'	RAIL, 8 ft. Section
SR9	8'8"	9'	RAIL, 9 ft. Section
SR10	9'8"	10'	RAIL, 10 ft. Section